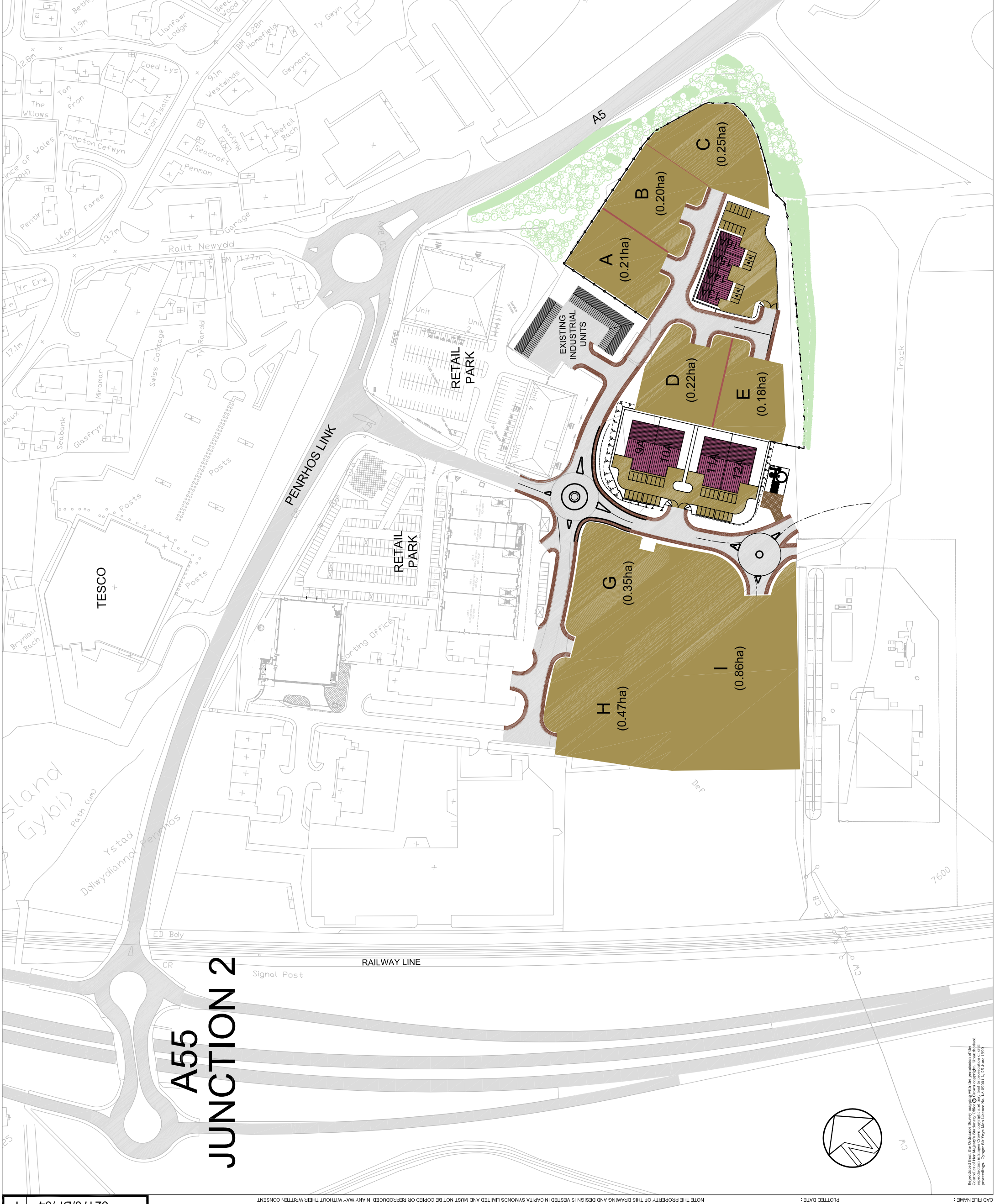


NOTES

Key:

- HIGHWAY AND FOOTPATH
- PARKING AND SERVICE ACCESS
- SELF-BUILD PLOTS
- EXISTING UNITS
- NEW BUILD UNITS



REV F
DRAWING NUMBER 62170/DP/04

A55 JUNCTION 2

NOTE THE PROPERTY OF THIS DRAWING AND DESIGN IS VESTED IN CAPITA SYMONDS LIMITED AND MUST NOT BE COPIED OR REPRODUCED IN ANY WAY WITHOUT THEIR WRITTEN CONSENT

PLOTTED DATE:

CAD FILE NAME: Reproduced from the Ordnance Survey mapping with the permission of the Controller of Her Majesty's Stationery Office. Crown copyright. Unauthorised reproduction is prohibited. Ordnance Survey Licence No. LA 09001 L1, 25 June 1999

REV	DRAWN BY	CHECKED BY	PASSED BY	DATE
F	AL	JES	JES	NOV. '05
E	AL	JES	JES	NOV. '05
D	AL	JES	JES	NOV. '05
C	AL	JES	JES	NOV. '05
B	AL	JES	JES	NOV. '05
A	AL	JES	JES	NOV. '05

REV	DESCRIPTION	DATE
F	BOUNDARY LINE TO H.G. AND I. REMOVED.	21.02.2006
E	MINOR AMENDMENTS TO A55 TEXT	14.01.2006
D	MINOR AMENDMENTS TO TEXT	12.12.2005
C	AMENDED IN ACCORDANCE WITH ANGLESEY C.C. COMMENTS	11.12.2005
B	AMENDED IN ACCORDANCE WITH ANGLESEY C.C. COMMENTS	25.11.2005
A	FIRST ISSUE	15.11.2005

SCALES @ A1
1:1000
COLWYN BAY

PENRHOS BUSINESS PARK
HOLYHEAD
INDICATIVE
LOCATION PLAN



CAPITA SYMONDS
Penrhos Manor, Oak Drive, Colwyn Bay,
North Wales, LL29 7YW
Tel: 01492 533333
Fax: 01492 533333

DRAWING NUMBER 62170/DP/04
REV F